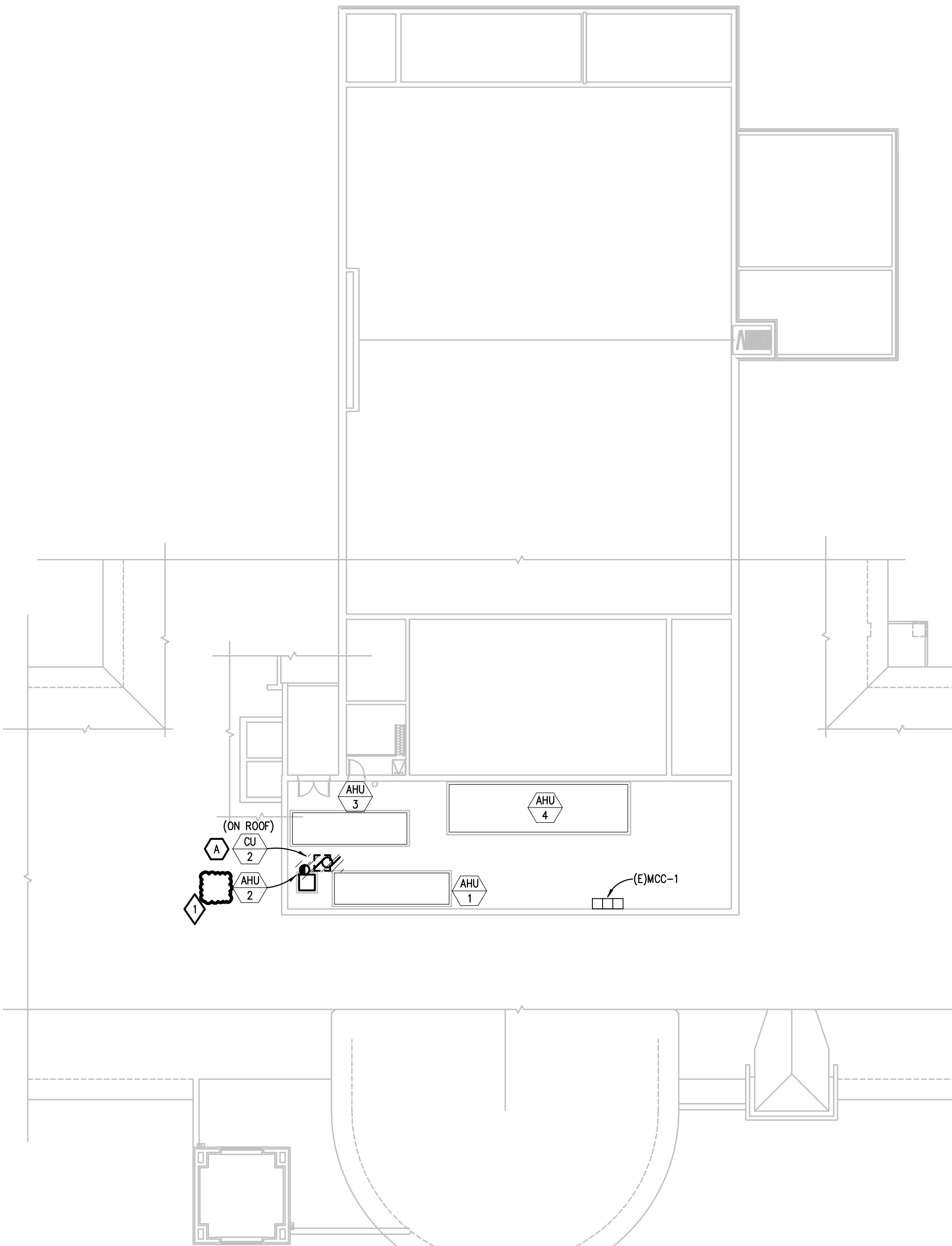
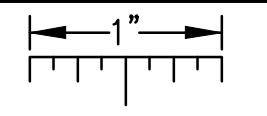
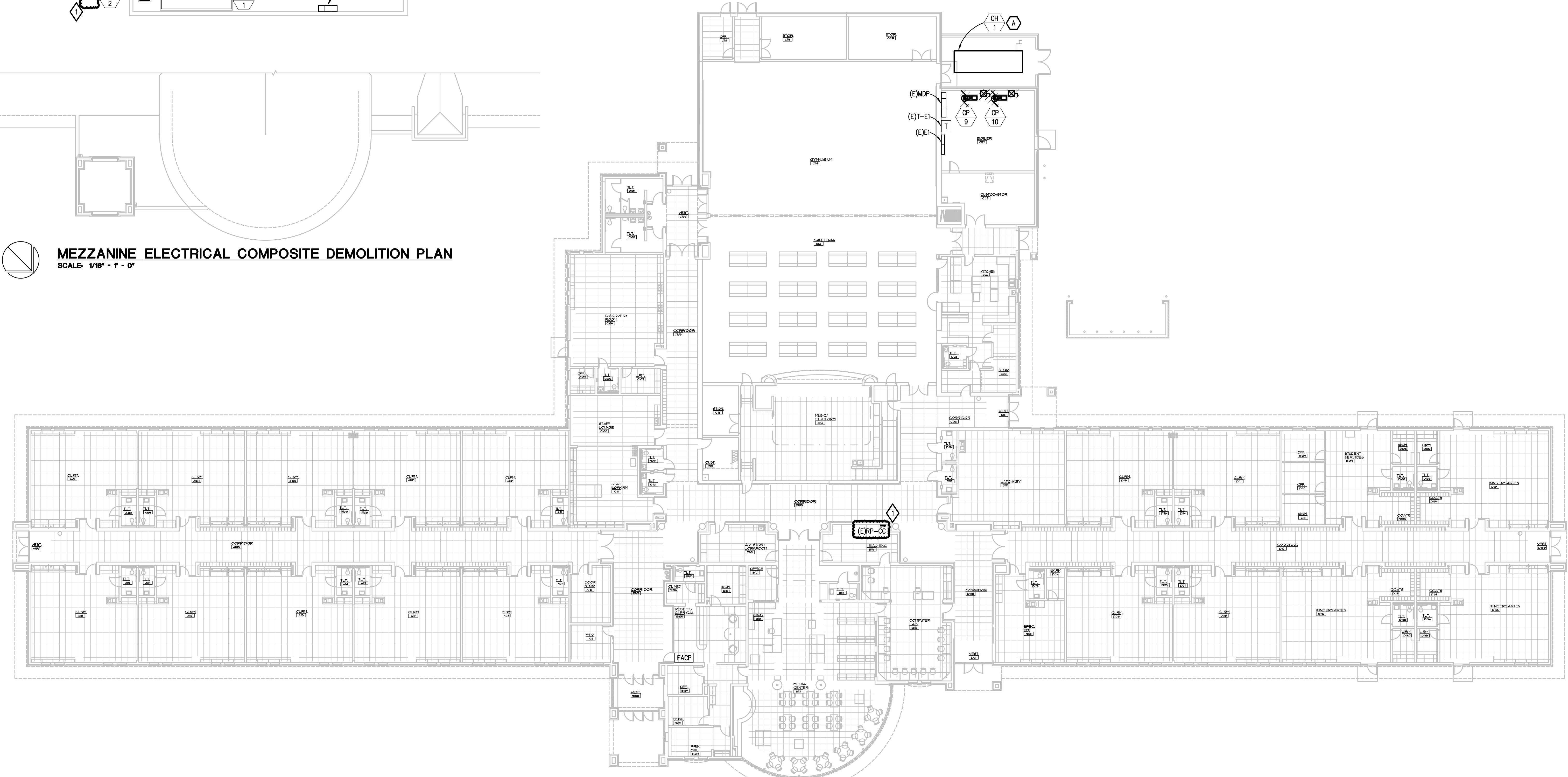


THE FOLLOWING DIMENSION EQUALS ONE INCH WHEN PRINTED TO SCALE.



MEZZANINE ELECTRICAL COMPOSITE DEMOLITION PLAN
SCALE: 1/16" = 1' - 0"



FIRST FLOOR ELECTRICAL COMPOSITE DEMOLITION PLAN
SCALE: 1/16" = 1' - 0"

ELECTRICAL DEMOLITION GENERAL NOTES:

1. VISIT THE SITE PRIOR TO SUBMISSION OF BID TO EXAMINE THE EXISTING CONDITIONS AND THE EXTENT OF DEMOLITION WORK.
2. EXAMINE THE DRAWINGS OF OTHER TRADES AND BE FAMILIAR WITH THE DEMOLITION REQUIRED BY OTHER TRADES. PERFORM ALL INCIDENTAL ELECTRICAL DEMOLITION AND/OR RELOCATION REQUIRED TO FACILITATE THE DEMOLITION WORK OF OTHER TRADES, WHETHER OR NOT SPECIFICALLY INDICATED.
3. REMOVE EQUIPMENT OR MATERIALS AS INDICATED ON PLAN WITH CROSS HATCHING. DEMOLITION SHALL INCLUDE, BUT NOT BE LIMITED TO, THOSE COMPONENTS SHOWN.
4. COORDINATE WITH NEW WORK PLANS, ONE LINE DIAGRAMS AND RISER DIAGRAMS FOR EXTENT OF DEMOLITION WORK.
5. PROVIDE PROPER SUPPORT FOR EXISTING TO REMAIN CONDUITS AND BOXES WHERE EXISTING SUPPORT IS TO BE REMOVED. RE-ROUTE BRANCH CIRCUIT CONDUITS AND RELOCATE JUNCTION BOXES AS REQUIRED TO FACILITATE INSTALLATION OF NEW EQUIPMENT AND SYSTEMS IN CEILING SPACES.
6. REMOVE ALL CONDUIT AND WIRE BACK TO THE SOURCE OR NEAREST UPSTREAM DEVICE REMAINING IN SERVICE.
7. MAINTAIN ELECTRICAL SERVICE TO ALL LIGHTING FIXTURES, DEVICES AND EQUIPMENT THAT ARE TO REMAIN. EXTEND CONDUIT AND WIRE AS REQUIRED WHERE DEMOLITION WORK AFFECTS ELECTRICAL SERVICE TO DOWNSTREAM LOADS THAT ARE TO REMAIN.
8. DISPOSE OF ALL MATERIALS OFF SITE AND INCLUDE ALL COSTS FOR DISPOSAL IN BID. ALL MATERIALS SHALL BE DISPOSED OF IN ACCORDANCE WITH ALL FEDERAL, STATE, AND LOCAL REGULATIONS, INCLUDING TCLP TESTING, PROPER DISPOSAL AND/OR RECYCLING OF FLUORESCENT LAMPS.
9. PROVIDE BLANK COVER PLATES WHERE SWITCHES AND DEVICES ARE REMOVED BUT EXISTING WALLS REMAIN INTACT.
10. RING OUT AND TAG ALL CIRCUITS AFFECTED BY THIS ALTERATION AT BOTH ENDS. MARK ALL UNUSED CIRCUIT BREAKERS "SPARE".
11. PROVIDE UPDATED TYPED-IN DIRECTORIES FOR ALL PANELS AFFECTED BY THIS ALTERATION.
12. VERIFY ALL UNDERGROUND AND IN SLAB UTILITY LOCATIONS PRIOR TO SAW-CUTTING OR PENETRATING ANY FLOOR SLAB.
13. COORDINATE ANY SHUT DOWN OF EXISTING SERVICES AND EQUIPMENT THAT ARE REMAINING IN USE WITH THE OWNER'S REPRESENTATIVE. WHERE EXISTING BUILDING SERVICE IS REQUIRED TO BE SHUT DOWN, INCLUDE ALL ASSOCIATED OVERTIME COSTS TO PERFORM THIS WORK DURING WEEKENDS AND EVENINGS INCLUDE ALL COSTS FOR PROVIDING TEMPORARY POWER WHERE SHUT DOWNS MUST OCCUR FOR PERIODS LONGER THAN THESE HOURS. COORDINATE ELECTRICAL SHUT DOWNS WITH THE OWNER 72 HOURS PRIOR TO SHUT DOWN.

DEMOLITION KEY NOTES:

- A. MECHANICAL EQUIPMENT BEING REMOVED. MAINTAIN BRANCH CIRCUIT FOR REUSE.

REVISION
ADDENDUM NO.1
05-22-2026

5145 Livemore, Suite 100
Troy, Michigan 48066-8276
www.PeterBassoAssociates.com
PBA Project#: 2026-0034
Peter Basso Associates
CONSULTING ENGINEERS

PROJECT TITLE
**ANCHOR BAY SCHOOL DISTRICT
MANOCE ELEMENTARY SCHOOL
HVAC Upgrade**
5201 County Line Road, Casco, MI 48064

Not for Construction
SHEET TITLE
**ELECTRICAL COMPOSITE
DEMOLITION PLAN**
DATE
05-1-2026
ISSUE
CONSTRUCTION
DOCUMENTS
SHEET No.
ED0.3

g:\2026\2026-0034-00\CAD\53 manocce es hvac upgrade\2026-0034-53-ED0-CMP1.dwg, ED0.3, 5/22/2026 9:45:40 AM, Nathan D.B., Hand, Peter Basso Associates Inc.